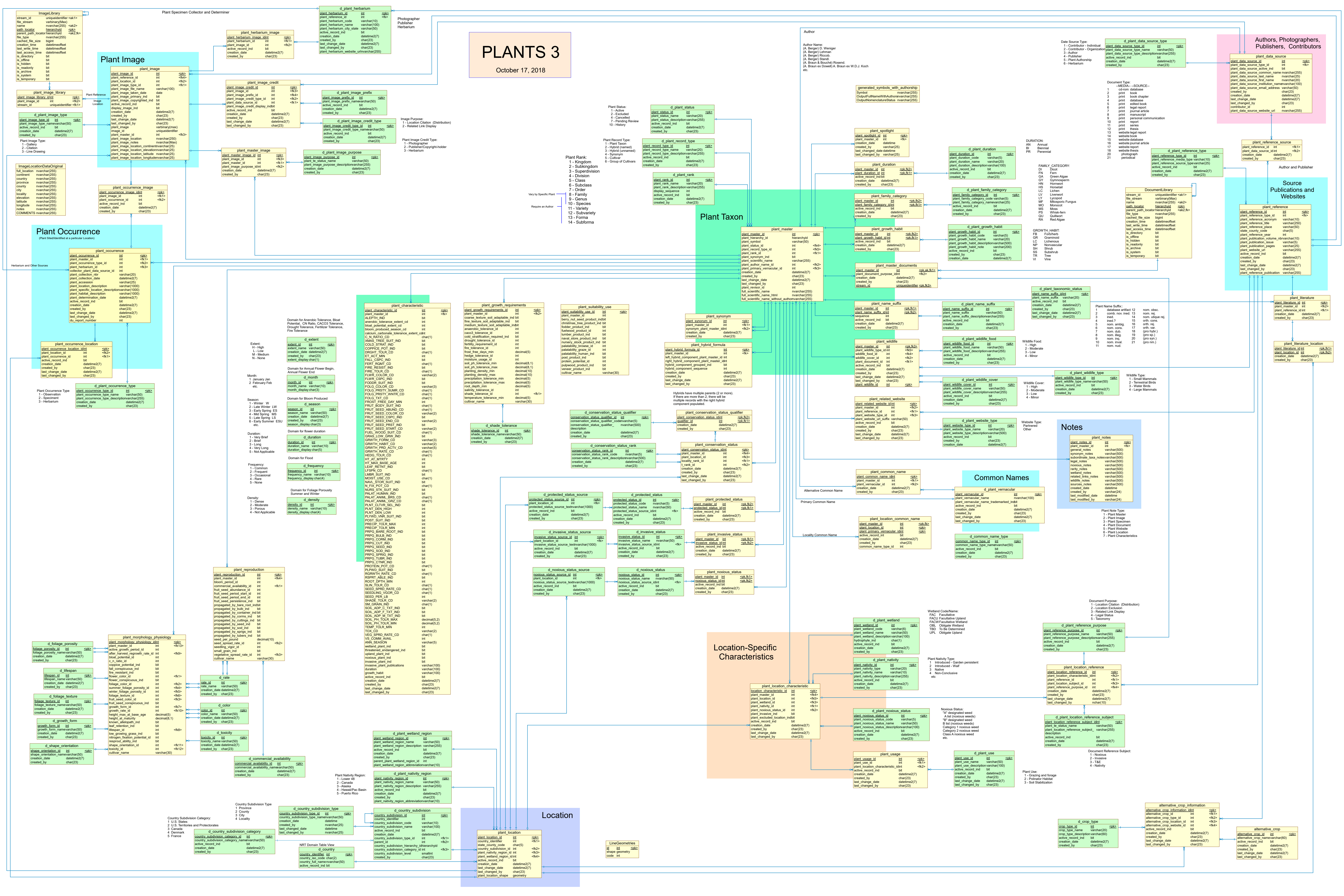


# PLANTS 3

October 17, 2018



- ### Plant Rank
- 1 - Kingdom
  - 2 - Subkingdom
  - 3 - Superdivision
  - 4 - Division
  - 5 - Class
  - 6 - Subclass
  - 7 - Order
  - 8 - Family
  - 9 - Genus
  - 10 - Species
  - 11 - Variety
  - 12 - Subvariety
  - 13 - Forma
  - 14 - Subforma
- Require an Author
- Plant Status:
- 1 - Active
  - 2 - Excluded
  - 3 - Cancelled
  - 4 - Synonym
  - 5 - Pending Review
  - 6 - History
- Plant Record Type:
- 1 - Plant Taxon
  - 2 - Hybrid (named)
  - 3 - Hybrid (unnamed)
  - 4 - Synonym
- Image Purpose:
- 1 - Location Citation (Distribution)
  - 2 - Related Link Display
  - 3 - Herbarium
- Plant Image Credit Type:
- 1 - Photographer
  - 2 - Publisher/Contributor
  - 3 - Herbarium
- Plant Image Type:
- 1 - Gallery
  - 2 - Catalog
  - 3 - Line Drawing
- Plant Occurrence Type:
- 1 - Observation
  - 2 - Specimen
  - 3 - Herbarium
- Plant Occurrence Location:
- 1 - High
  - 2 - Low
  - 3 - Medium
  - 4 - None
- Plant Occurrence Type:
- 1 - Winter
  - 2 - Late Winter
  - 3 - Early Spring
  - 4 - Mid Spring
  - 5 - Late Spring
  - 6 - Early Summer
- Plant Occurrence Duration:
- 1 - Very Brief
  - 2 - Brief
  - 3 - Common
  - 4 - Very Long
  - 5 - Not Applicable
- Plant Occurrence Frequency:
- 1 - Common
  - 2 - Frequent
  - 3 - Occasional
  - 4 - Rare
  - 5 - None
- Plant Occurrence Density:
- 1 - Dense
  - 2 - Moderate
  - 3 - Porous
  - 4 - Not Applicable
- Plant Occurrence Domain:
- 1 - Lowland
  - 2 - Upland
  - 3 - Mountain
  - 4 - Subalpine
  - 5 - Alpine
- Plant Occurrence Frequency:
- 1 - Very Brief
  - 2 - Brief
  - 3 - Common
  - 4 - Very Long
  - 5 - Not Applicable
- Plant Occurrence Frequency:
- 1 - Common
  - 2 - Frequent
  - 3 - Occasional
  - 4 - Rare
  - 5 - None
- Plant Occurrence Density:
- 1 - Dense
  - 2 - Moderate
  - 3 - Porous
  - 4 - Not Applicable
- Plant Occurrence Domain:
- 1 - Lowland
  - 2 - Upland
  - 3 - Mountain
  - 4 - Subalpine
  - 5 - Alpine

- ### Authors, Photographers, Publishers, Contributors
- Author Name:
- 1 - Contributor - Individual
  - 2 - Contributor - Organization
  - 3 - Author
  - 4 - Publisher
  - 5 - Plant Authority
  - 6 - Herbarium
- Document Type:
- 1 - M-DNA --SOURCE--
  - 2 - print book
  - 3 - print book chapter
  - 4 - print database
  - 5 - print edited book
  - 6 - print legal report
  - 7 - print journal article
  - 8 - print manuscript
  - 9 - print personal communication
  - 10 - print report
  - 11 - print series
  - 12 - print thesis
  - 13 - webblog root
  - 14 - webblog root
  - 15 - webblog root
  - 16 - webblog root
  - 17 - webblog root
  - 18 - webblog root
  - 19 - webblog root
  - 20 - webblog root
  - 21 - webblog root
- Document Purpose:
- 1 - Location Citation (Distribution)
  - 2 - Location Exclusion
  - 3 - Dispute Display
  - 4 - Legal Status
  - 5 - Taxonomy
- Document Reference Subject:
- 1 - Invasive
  - 2 - Invasive
  - 3 - Invasive
  - 4 - Nativity
- Document Reference Subject:
- 1 - Invasive
  - 2 - Invasive
  - 3 - Invasive
  - 4 - Nativity

- ### Source Publications and Websites
- Plant Reference:
- 1 - Plant Reference
  - 2 - Plant Reference
  - 3 - Plant Reference
  - 4 - Plant Reference
  - 5 - Plant Reference
  - 6 - Plant Reference
  - 7 - Plant Reference
  - 8 - Plant Reference
  - 9 - Plant Reference
  - 10 - Plant Reference
  - 11 - Plant Reference
  - 12 - Plant Reference
  - 13 - Plant Reference
  - 14 - Plant Reference
  - 15 - Plant Reference
  - 16 - Plant Reference
  - 17 - Plant Reference
  - 18 - Plant Reference
  - 19 - Plant Reference
  - 20 - Plant Reference
  - 21 - Plant Reference
- Plant Reference Location:
- 1 - Plant Reference Location
  - 2 - Plant Reference Location
  - 3 - Plant Reference Location
  - 4 - Plant Reference Location
  - 5 - Plant Reference Location
  - 6 - Plant Reference Location
  - 7 - Plant Reference Location
  - 8 - Plant Reference Location
  - 9 - Plant Reference Location
  - 10 - Plant Reference Location
  - 11 - Plant Reference Location
  - 12 - Plant Reference Location
  - 13 - Plant Reference Location
  - 14 - Plant Reference Location
  - 15 - Plant Reference Location
  - 16 - Plant Reference Location
  - 17 - Plant Reference Location
  - 18 - Plant Reference Location
  - 19 - Plant Reference Location
  - 20 - Plant Reference Location
  - 21 - Plant Reference Location
- Plant Reference Location:
- 1 - Plant Reference Location
  - 2 - Plant Reference Location
  - 3 - Plant Reference Location
  - 4 - Plant Reference Location
  - 5 - Plant Reference Location
  - 6 - Plant Reference Location
  - 7 - Plant Reference Location
  - 8 - Plant Reference Location
  - 9 - Plant Reference Location
  - 10 - Plant Reference Location
  - 11 - Plant Reference Location
  - 12 - Plant Reference Location
  - 13 - Plant Reference Location
  - 14 - Plant Reference Location
  - 15 - Plant Reference Location
  - 16 - Plant Reference Location
  - 17 - Plant Reference Location
  - 18 - Plant Reference Location
  - 19 - Plant Reference Location
  - 20 - Plant Reference Location
  - 21 - Plant Reference Location

- ### Notes
- Plant Note Type:
- 1 - Plant Master
  - 2 - Plant Specimen
  - 3 - Plant Specimen
  - 4 - Plant Specimen
  - 5 - Plant Website
  - 6 - Plant Website
  - 7 - Plant Website
  - 8 - Plant Website
  - 9 - Plant Website
  - 10 - Plant Website
  - 11 - Plant Website
  - 12 - Plant Website
  - 13 - Plant Website
  - 14 - Plant Website
  - 15 - Plant Website
  - 16 - Plant Website
  - 17 - Plant Website
  - 18 - Plant Website
  - 19 - Plant Website
  - 20 - Plant Website
  - 21 - Plant Website
- Plant Note Type:
- 1 - Plant Master
  - 2 - Plant Specimen
  - 3 - Plant Specimen
  - 4 - Plant Specimen
  - 5 - Plant Website
  - 6 - Plant Website
  - 7 - Plant Website
  - 8 - Plant Website
  - 9 - Plant Website
  - 10 - Plant Website
  - 11 - Plant Website
  - 12 - Plant Website
  - 13 - Plant Website
  - 14 - Plant Website
  - 15 - Plant Website
  - 16 - Plant Website
  - 17 - Plant Website
  - 18 - Plant Website
  - 19 - Plant Website
  - 20 - Plant Website
  - 21 - Plant Website

- ### Common Names
- Plant Common Name:
- 1 - Plant Common Name
  - 2 - Plant Common Name
  - 3 - Plant Common Name
  - 4 - Plant Common Name
  - 5 - Plant Common Name
  - 6 - Plant Common Name
  - 7 - Plant Common Name
  - 8 - Plant Common Name
  - 9 - Plant Common Name
  - 10 - Plant Common Name
  - 11 - Plant Common Name
  - 12 - Plant Common Name
  - 13 - Plant Common Name
  - 14 - Plant Common Name
  - 15 - Plant Common Name
  - 16 - Plant Common Name
  - 17 - Plant Common Name
  - 18 - Plant Common Name
  - 19 - Plant Common Name
  - 20 - Plant Common Name
  - 21 - Plant Common Name
- Plant Common Name:
- 1 - Plant Common Name
  - 2 - Plant Common Name
  - 3 - Plant Common Name
  - 4 - Plant Common Name
  - 5 - Plant Common Name
  - 6 - Plant Common Name
  - 7 - Plant Common Name
  - 8 - Plant Common Name
  - 9 - Plant Common Name
  - 10 - Plant Common Name
  - 11 - Plant Common Name
  - 12 - Plant Common Name
  - 13 - Plant Common Name
  - 14 - Plant Common Name
  - 15 - Plant Common Name
  - 16 - Plant Common Name
  - 17 - Plant Common Name
  - 18 - Plant Common Name
  - 19 - Plant Common Name
  - 20 - Plant Common Name
  - 21 - Plant Common Name

- ### Location-Specific Characteristics
- Plant Location Characteristic:
- 1 - Plant Location Characteristic
  - 2 - Plant Location Characteristic
  - 3 - Plant Location Characteristic
  - 4 - Plant Location Characteristic
  - 5 - Plant Location Characteristic
  - 6 - Plant Location Characteristic
  - 7 - Plant Location Characteristic
  - 8 - Plant Location Characteristic
  - 9 - Plant Location Characteristic
  - 10 - Plant Location Characteristic
  - 11 - Plant Location Characteristic
  - 12 - Plant Location Characteristic
  - 13 - Plant Location Characteristic
  - 14 - Plant Location Characteristic
  - 15 - Plant Location Characteristic
  - 16 - Plant Location Characteristic
  - 17 - Plant Location Characteristic
  - 18 - Plant Location Characteristic
  - 19 - Plant Location Characteristic
  - 20 - Plant Location Characteristic
  - 21 - Plant Location Characteristic
- Plant Location Characteristic:
- 1 - Plant Location Characteristic
  - 2 - Plant Location Characteristic
  - 3 - Plant Location Characteristic
  - 4 - Plant Location Characteristic
  - 5 - Plant Location Characteristic
  - 6 - Plant Location Characteristic
  - 7 - Plant Location Characteristic
  - 8 - Plant Location Characteristic
  - 9 - Plant Location Characteristic
  - 10 - Plant Location Characteristic
  - 11 - Plant Location Characteristic
  - 12 - Plant Location Characteristic
  - 13 - Plant Location Characteristic
  - 14 - Plant Location Characteristic
  - 15 - Plant Location Characteristic
  - 16 - Plant Location Characteristic
  - 17 - Plant Location Characteristic
  - 18 - Plant Location Characteristic
  - 19 - Plant Location Characteristic
  - 20 - Plant Location Characteristic
  - 21 - Plant Location Characteristic

- ### Location
- Plant Location:
- 1 - Plant Location
  - 2 - Plant Location
  - 3 - Plant Location
  - 4 - Plant Location
  - 5 - Plant Location
  - 6 - Plant Location
  - 7 - Plant Location
  - 8 - Plant Location
  - 9 - Plant Location
  - 10 - Plant Location
  - 11 - Plant Location
  - 12 - Plant Location
  - 13 - Plant Location
  - 14 - Plant Location
  - 15 - Plant Location
  - 16 - Plant Location
  - 17 - Plant Location
  - 18 - Plant Location
  - 19 - Plant Location
  - 20 - Plant Location
  - 21 - Plant Location
- Plant Location:
- 1 - Plant Location
  - 2 - Plant Location
  - 3 - Plant Location
  - 4 - Plant Location
  - 5 - Plant Location
  - 6 - Plant Location
  - 7 - Plant Location
  - 8 - Plant Location
  - 9 - Plant Location
  - 10 - Plant Location
  - 11 - Plant Location
  - 12 - Plant Location
  - 13 - Plant Location
  - 14 - Plant Location
  - 15 - Plant Location
  - 16 - Plant Location
  - 17 - Plant Location
  - 18 - Plant Location
  - 19 - Plant Location
  - 20 - Plant Location
  - 21 - Plant Location

- ### Location
- Plant Location:
- 1 - Plant Location
  - 2 - Plant Location
  - 3 - Plant Location
  - 4 - Plant Location
  - 5 - Plant Location
  - 6 - Plant Location
  - 7 - Plant Location
  - 8 - Plant Location
  - 9 - Plant Location
  - 10 - Plant Location
  - 11 - Plant Location
  - 12 - Plant Location
  - 13 - Plant Location
  - 14 - Plant Location
  - 15 - Plant Location
  - 16 - Plant Location
  - 17 - Plant Location
  - 18 - Plant Location
  - 19 - Plant Location
  - 20 - Plant Location
  - 21 - Plant Location
- Plant Location:
- 1 - Plant Location
  - 2 - Plant Location
  - 3 - Plant Location
  - 4 - Plant Location
  - 5 - Plant Location
  - 6 - Plant Location
  - 7 - Plant Location
  - 8 - Plant Location
  - 9 - Plant Location
  - 10 - Plant Location
  - 11 - Plant Location
  - 12 - Plant Location
  - 13 - Plant Location
  - 14 - Plant Location
  - 15 - Plant Location
  - 16 - Plant Location
  - 17 - Plant Location
  - 18 - Plant Location
  - 19 - Plant Location
  - 20 - Plant Location
  - 21 - Plant Location

- ### Location
- Plant Location:
- 1 - Plant Location
  - 2 - Plant Location
  - 3 - Plant Location
  - 4 - Plant Location
  - 5 - Plant Location
  - 6 - Plant Location
  - 7 - Plant Location
  - 8 - Plant Location
  - 9 - Plant Location
  - 10 - Plant Location
  - 11 - Plant Location
  - 12 - Plant Location
  - 13 - Plant Location
  - 14 - Plant Location
  - 15 - Plant Location
  - 16 - Plant Location
  - 17 - Plant Location
  - 18 - Plant Location
  - 19 - Plant Location
  - 20 - Plant Location
  - 21 - Plant Location
- Plant Location:
- 1 - Plant Location
  - 2 - Plant Location
  - 3 - Plant Location
  - 4 - Plant Location
  - 5 - Plant Location
  - 6 - Plant Location
  - 7 - Plant Location
  - 8 - Plant Location
  - 9 - Plant Location
  - 10 - Plant Location
  - 11 - Plant Location
  - 12 - Plant Location
  - 13 - Plant Location
  - 14 - Plant Location
  - 15 - Plant Location
  - 16 - Plant Location
  - 17 - Plant Location
  - 18 - Plant Location
  - 19 - Plant Location
  - 20 - Plant Location
  - 21 - Plant Location